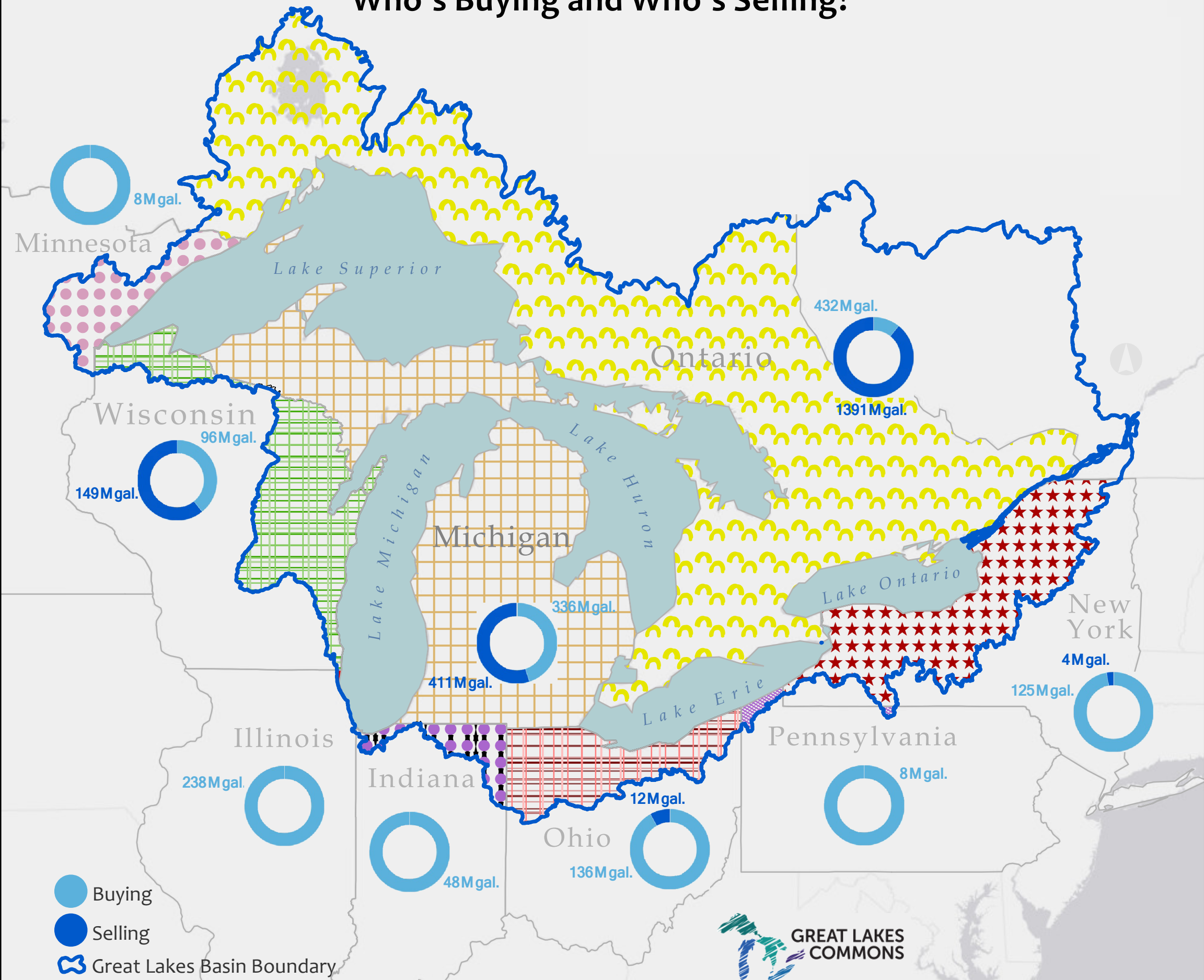


# Bottled Water in the Great Lakes Basin: Who's Buying and Who's Selling?



Bottled Water Permits 2013: Wisconsin Department of Natural Resources; Minnesota Department of Natural Resources; Michigan Department of Environmental Quality; Ohio Department of Natural Resources; New York Office of Information Technology Services; Illinois Department of Natural Resources; Indiana Department of Natural Resources; Ontario Open Data Share  
 Bottled Water Consumption 2014: <http://www.canadianbeverage.ca/resources/setting-the-record-straight-on-bottled-water/>, <http://www.bottledwater.org/economics/bottled-water-market>  
 Population: USA - Esri, US Census Bureau, 2015; Canada - Esri, Environics Analytics \*Withdrawal rates for New York and Ontario are estimated by amount allowed with permit.

Map by:  
 Paul Baines (Author)  
 Caitlin Scopel (Researcher & Cartographer)  
 Crystalyn Delacruz (Cartographer)